

# PRX-4

## Your Doorway to Proximity Access Control

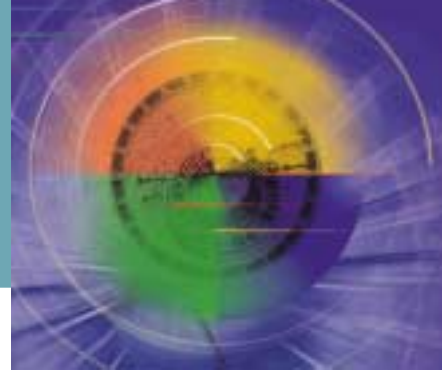
### The innovative stand-alone terminal

The stand-alone, easy-to-install access control proximity terminal

- Reliable, attractive, compact and waterproof design
- Perfect for areas with limited access or space
- Allows access for up to 400 cardholders
- Keeps out unauthorized persons
- Internal relay for door latch activation
- Setup and control either directly on the terminal itself, or by PC, using the software provided.
- 10 cm reading distance
- Easy to install



# PRX-4



## opening a door was never so easy

- The PRX-4 was developed as the perfect, easy-to-use proximity device, to serve as a stand-alone access control terminal. This compact terminal, made of strong ABS plastic, can be installed almost anywhere identification is needed.
- PRX-4 provides extra protection against vandalism and weather: You can install the access control terminal in semi-concealed areas, such as behind a door or on non-metal building materials.
- Contact-free, the devices eliminate the need to physically swipe a card.

### Just Attach – and You're in Control

### Setting Up the System

Simply set up directly on the terminal itself or use the PC-based software via the program provided.

- To load or modify a list of permitted cardholders, special proximity cards are provided with the unit.
- As an option, a simple connection to a PC will provide you with the ability to create a database, which will give you control over the addition and deletion of cardholders.
- Once a card has been read and accepted, the output relay is energized and the door lock is activated.

### Technical Specifications

- Maximum Reading Range: 10 cm (4 in.)
- Man-machine Interface: LED indicators for card acceptance
- Operating frequency: 125 kHz
- Power Supply: 9 to 12 Vac or 12 Vdc
- Memory Capacity: Sufficient for 400 users
- Interface: RS-232 (ASCII); 9600 bps;
- Output relay rating: 24 V@ 3A
- Power Supply: 9 Vac / 12 Vdc

### Mechanical Features

- Dimensions: 13 x 4.3 x 2 cm (5.13 x 1.66 x 0.75 inch)
- Weight: 180 gr
- Operating temperature: -22° to + 50°C
- Relative humidity: 100%

### Contactless Chipcard

- Protection class per ISO/IEC 10536
- Dimensions per ISO 7816 (standard credit card)
- Storage temperature: -35° to +50° C
- Resonance frequency: 125 kHz



### "Forward Security Systems"

authorized distributor Synel Industries

Lenina st.21-A, Lytkarino, Moscow area, 140081, Russia

Tel.: +7(095)506-1916; Fax.: +7(095)552-7881

e-mail: info@biometricsecurity.ru;

fs-system@mail.ru

http://www.biometricsecurity.ru